

The Apple Press

Friends of Glenan Wood Newsletter

Winter 2025/6 Issue 4

This Issues Juice:

1. Your Glenan...
2. Path Matters
3. L to the T to the ...
4. Consultations held
5. Money Matters
6. Thanks
7. Poetry Corner

Matters of Interest

Water takes it's course

Long Term Forest Plan

Appraisal results online
& news of Heritage
Grant in development

Page 2

Things of the Past

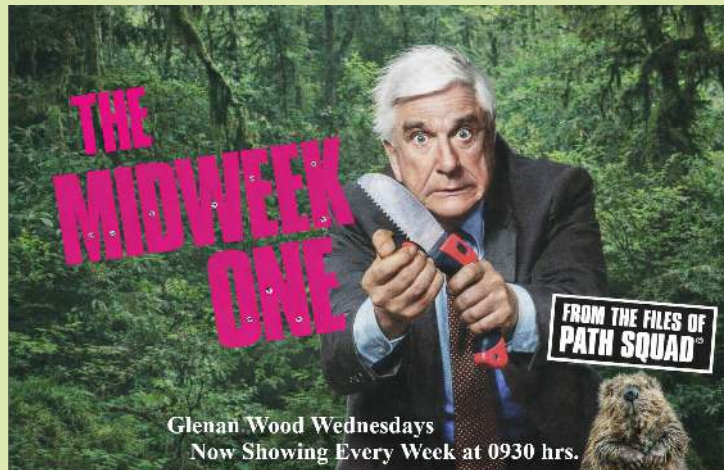
- Find out how money fell out of the Canopy.
- A gentle reminder that we do in fact still need a Treasurer.
- All the fabulous events that happened over the Winter months

Page 3

Hold Fast

A poem about holding potentiality, written at one of the seasonal Gaelic Festivals, the halfway point between the winter solstice and the spring equinox.

Page 4



Advertisement: A Conservation Volunteering group meets to 'get stuff done' every Wednesday of the woodland year. All ages & abilities are welcome.

glenanwood.org.uk/get-involved/volunteering

Your Glenan, Your Stories

We are inviting people with roots in the parish to share their stories of Glenan Wood & the surrounding area to help document the living traditions, knowledge and expressions that give our community identity and continuity.

Oral traditions and expressions are a form of intangible cultural heritage - Things that are passed through generations, shaping how people understand their lives and environment. It contributes to social cohesion, wellbeing and a sense of belonging in rural places.

It is hoped the recording & archiving of memories, feelings and attitudes will capture firsthand experience that might otherwise be lost. These testimonies document everyday life and connect us to the natural and social fabric of our community woodland.

If you'd like, your story can be added to the Community Land Scotland's **100years.scot** digital archive. Get in touch with Iain Waugh, Peter Budney & Ben Mitchell at the following email:

heritagearchives@glenanwood.org.uk

Path Matters

Just below the village, you may have noticed that a small section of path just before a footbridge crosses west glen burn has been eroding over the past few years & now has started to become lower than the level of the burn itself.

Over the summer months, our Forest Ranger will be remedying this with the path squad by rerouting a 20 metre section of path on contour. If you have any concerns, queries

or would like to help with this piece of work, do get in touch.

We recognise that access is really important to our members, and at the same time it is a widely held view that this has to be achieved sensitively so as not to compromise efforts in ecological regeneration.

We are considering the implications of an all

accessible path connecting the orchard & compost toilet area with the main woodland via the existing conifer block, the bronze age cairn & the meadow. Our recent LIDAR study confirms old crossings & field boundaries documented in old maps .

A feasibility study will form part of a forthcoming application to the Heritage Lottery Fund (see below for details).

20 Year LTFP gets signed off...

We are pleased to announce that our Long Term Forest Plan has been approved by Scottish Forestry & is now available for download on our website.

A long term forest plan is a 20 year strategic management plan to demonstrate sustainable forest management.

The plan allows for the agreement of planned felling and restocking during the life

of the plan.

It identifies management objectives and allows for the gradual improvement of the woodland.

In addition to setting out our objectives for future board members, an approved LTFP means that we are now eligible for grants within the Forestry Grant Scheme.

We would like to thank Angus

Bevan of Native Woods Cooperative for his diligence & effort in submitting this on behalf of the charity.



glenanwood.org.uk/about-us/documents/reports/

Consultation Complete & Project Planning

The results of our consultation held in December are now uploaded to the documents section of the website.

Community and organisational feedback on our Ranger Service highlighted valued impacts, revealed unseen gaps, and will inform future decisions as Glenan Wood plans its next chapter.

The emergent findings that have arisen from our Social

Forestry project with the Community Lottery Fund and Phase 1 of our adopt a monument scheme with Archaeology Scotland will form the basis of an ambitious grant proposal to the Heritage Lottery Fund.

Over five years, the proposal seeks to fund a part time business manager and education officer to coordinate a series of public events focusing on natural and

cultural heritage & a vision of a future forest culture at Glenan Wood. Capital costs for a volunteer hub and all access path will also be scoped out in a series of feasibility studies.



Money Matters -

Big Canopy Campout Update:

In December, we received 5K in funds raised from BCC. In addition, via their networking, we are extremely grateful for a whopping 17K donated unexpectedly from Werner Siemens in Germany! In 2026, BCC are doing a "Storytelling" year. They are highlighting their past 3 causes (including us) & will be broadcasting what we are up to to their audience. Their other two causes are powering on with their efforts to save their rainforest habitats, & it will be interesting to see different areas and ecosystems of the world connect through stories.

Board Vacancy: Treasurer Wanted!

We are still advertising for a volunteer treasurer position. Huge thanks to board member Iain Waugh who has graciously stepped forward as placeholder for the role in the meantime.

Become a Glenan Rainforest Custodian

We are asking those who can to consider regular monthly financial support. This will help us as a charity to cover our ever increasing running costs. To date we have been reliant on grant funding but with funding becoming increasingly competitive we are looking to widen our funding streams to ensure that we can continue to work hard for our woodland and community.

You can set up a Direct Debit, for more details visit: glenanwood.org.uk/make-a-donation/

With Thanks...

Thanks to our friends at Archaeology Scotland for holding both an introduction to building surveying & field survey recording in October.

In November, our ranger led a rocket stove making course for residents concerned about meeting basic needs during power cuts. In the dark, we also held a number of biofluorescence walks with volunteers Ian & Ben.

Later that month, a major consultation was held by Archaeology Scotland entitled 'storytelling, interpretation & what this means to us'. This exercise, asked the parish which pathways to exploring heritage they would like to engage with for the second phase of the 'adopt a

monument' scheme we have enrolled in. Perhaps THE highlight of 2025, the consultation was well attended, with 45 people staying for dinner during the 'Festival of the Deer', with a stag cooked in the ground & served with all the trimmings at the ceilidh place.

Thanks to Andy from Archaeology Scotland for his kind exposition of all the finds we have documented in 2025. To Liz Cairns, Rob & Mike for tireless support with aprons on. To Nicola, Mark & Keith for support with infrastructure in the field; particularly the placement of an inspirational & temporary roof over the old walls at Cuid Oiche.

A similar consultation process

was held with pupils at the local school in this New Year.

2025 was 'capped' with lighting up the night of the Winter Solstice. A fire was lit to mark the start of Yule at the labyrinth in the meadow, with hot chocolate served by volunteers from the green ranger tent.

It was warming to see so many folk turn out on the darkest night to set their intentions for the year. We look forward to the season turning again!





Hold Fast - An imbolc poem

We hold in mind the fullness of a friend,
 Not as they are, but all they yet may be;
 So growth is fed by faith that will not bend,
 And hope makes room for what the heart can see.
 Now turn that tending vision to our wood—
 To Glenan Back, where patient roots endure;
 A living place of shadow, leaf, and flood,
 whose future waits, still fragile, still unsure.
 For years we've stirred a quiet, careful plan,
 A weaving of good will and grounded skill;
 A partnership not sealed, yet close at hand—
 A tide that nears the line with steady will.
 Not named aloud, but held as ember-bright,
 A promise carried softly, not to claim;
 We ask you: keep the possibility in sight,
 And let it warm the work we do in name.
 Imagine threats, once tangled, met with care,
 Not in a rush, but measured, wise, and long;
 With steps that learn, with proof that we can share,
 And feedback guiding what we do, and why, and strong.
 A fifty years' horizon, clear and kind,
 Where each small gain becomes a faithful sign—
 That Glenan's heart is healing, line by line,
 And time itself is made to re-align.

Let deer be fewer—held to gentler graze—
 So saplings rise, and age can find its place;
 The young can climb beyond the browsing haze,
 And future canopy can form with grace.
 Let rhododendron ponticun fade to none,
 No shadowed wall, no choking bloom remain;
 Let every root that steals the light be done,
 So native green may breathe & grow again.
 Let foreign conifers, self-sown & sly,
 Slip from the crown where they should never stand;
 Let space return to oak and birch and sky,
 To hazel, rowan, ash by stream and land.
 And still let hands come forward, one by one,
 Through outreach, welcome, laughter, shared resolve;
 To learn the craft of rainforest work well done,
 And watch the wounded places re-evolve.
 Let learning live—courses shaped for parish need,
 With outdoor classrooms open to the rain;
 Let wonder draw the traveller's careful feet,
 So income grows where wildness will remain.
 Hold this with us: the woodland's fuller face,
 The thriving end our patient steps pursue—
 Not yet announced, yet near enough to trace.
 Watch this space. The turning year comes through.



FRIENDS OF GLENAN WOOD

Tigh Eoin,
 Portavadie
 Tighnabruaich
 PA21 2DA

editor@glenanwood.org.uk

glenanwood.org.uk

Thanks for reading the
Apple Press!

This is a quarterly newsletter to update members of Friends of Glenan Wood. If you would like to submit an article for future editions, or contribute to the 'Our Voices' blog section of the website; please get in touch via the above address.

Full and Junior membership is available for free to anyone within the PA21 area, Associate membership is also available to anyone outwith our full members postcode area.

For a form, please contact:

membership@glenanwood.org.uk

